

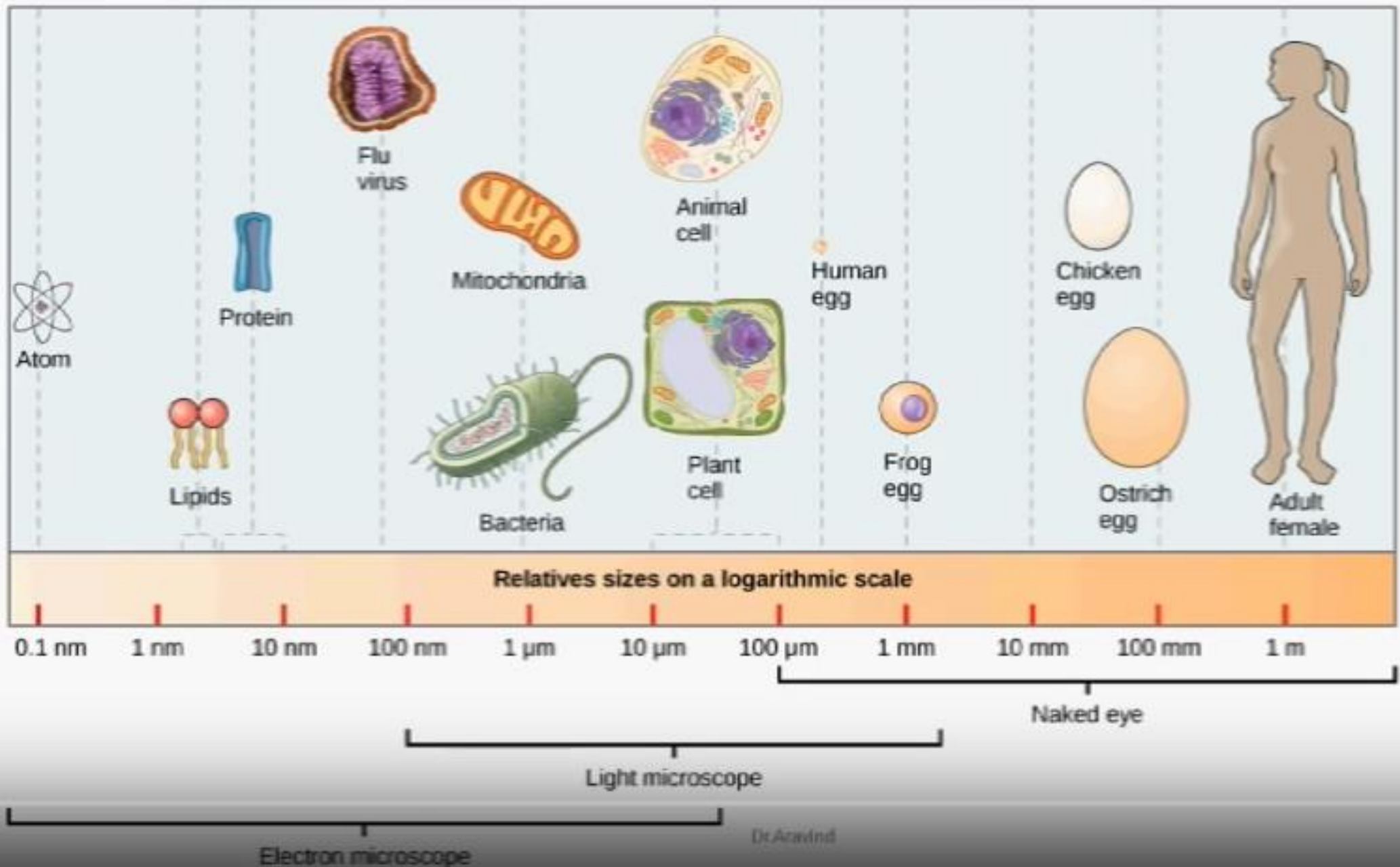


Introduction to Medical bacteriology

Microbiology: the study of Microorganisms

Microorganisms could be in Cellular form or Acellular particles

- Cellular : Bacteria, Parasite, Fungi
- Acellular : Viruses and Prions.



CHARACTERISTIC	PROKARYOTIC CELLS	EUKARYOTIC CELLS
Chromosome	Usually single, circular ¹	Multiple
Nucleus	No nuclear envelope or nucleoli	Membrane bound, nucleoli present
Membrane-bound organelles	Not present	Present (examples include mitochondria and endoplasmic reticulum)
Cell wall	Usually present, many contain peptidoglycan	Present in plant cells, no peptidoglycan
Plasma membrane	No carbohydrates, most lack sterols	Sterols and carbohydrates present
Ribosome	70S	80S (70S in organelles)
Average size	0.2–2 mm in diameter	10–100 mm in diameter

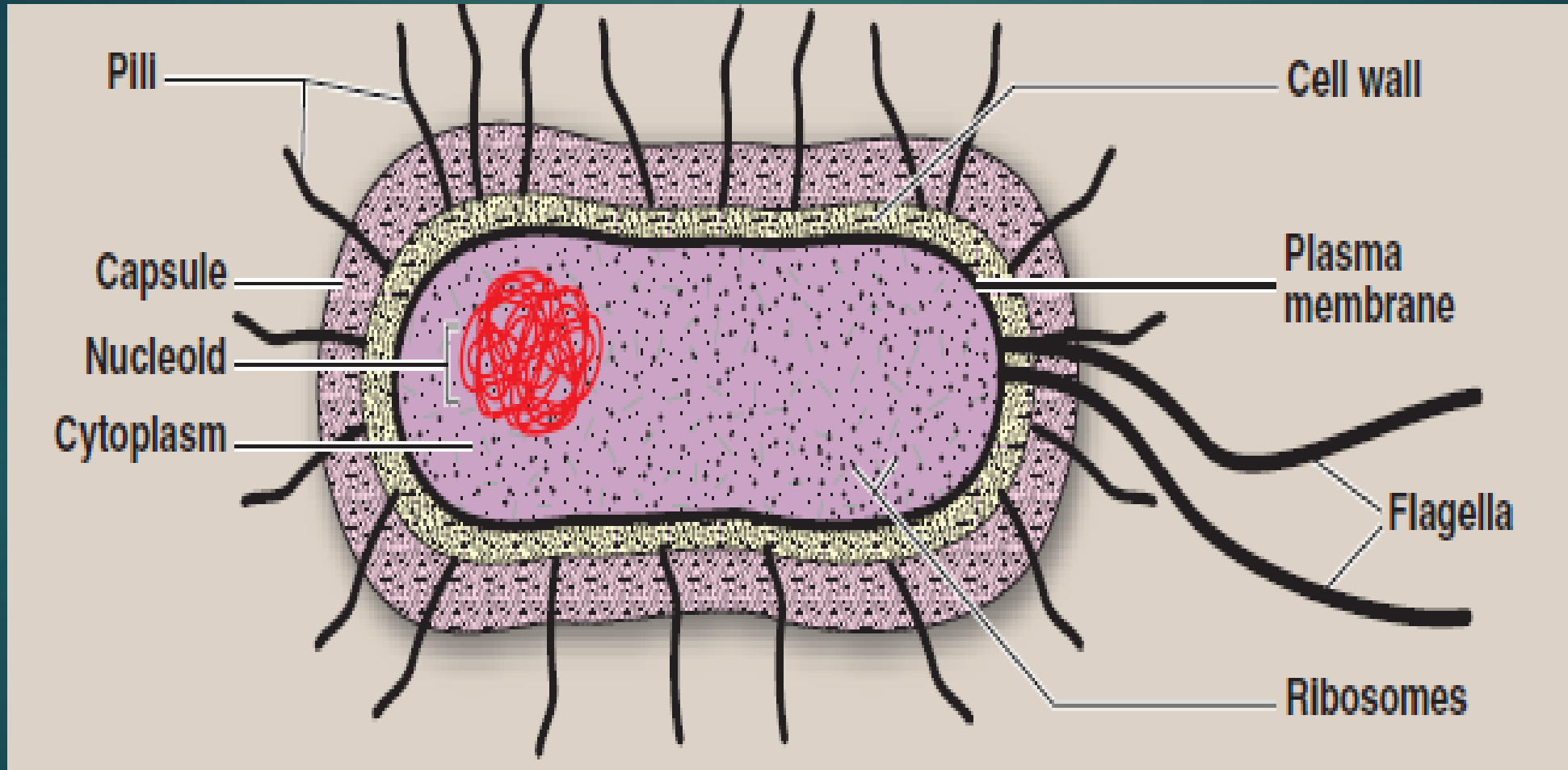
History

1665 Robert Hooke observed living plant tissues (Little boxes or cells)

Robert Koch (1876) postulates Germ theory:

- Specific M.O. is present in all cases of the disease.
- M.O. can be obtained in pure culture outside of the host.
- M.O. when re-inoculated into host causes the same symptoms.
- M.O. can be isolated in pure culture from experimentally infected host.

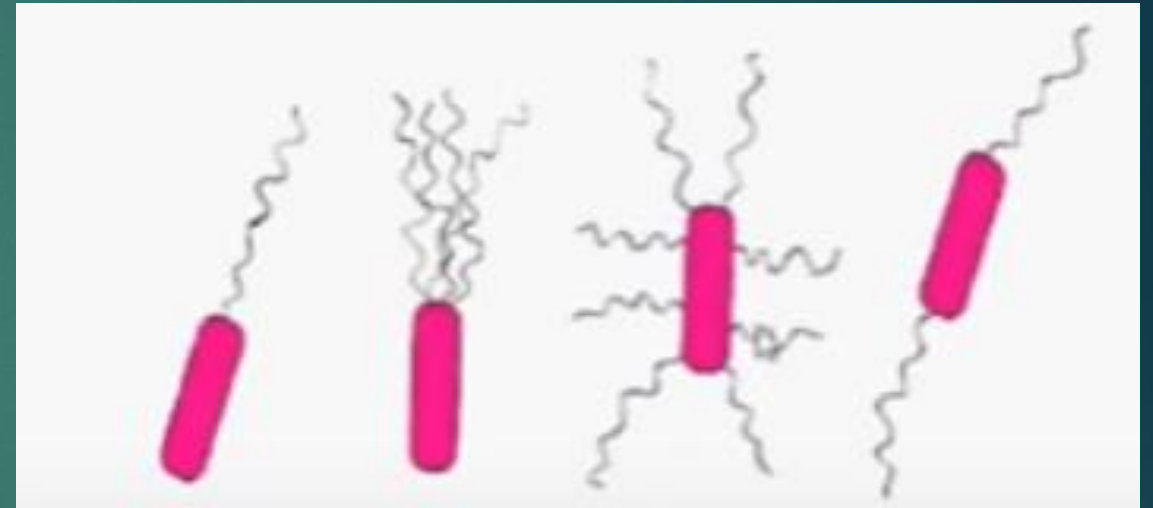
Structure of bacterial cell.



Cell surface Appendages: Flagella and Pili

Flagellum:

- ✓ Motility
- ✓ Attached to cell membrane
- ✓ Antigenic
- ✓ Types:
 - Monotrichous (*V. cholera*)
 - Lopotrichous (*Helicobacter*)
 - Peritrichous (*E. coli*)
 - Amphitrichous (*Rhodospirillum*)



Fimbriae and pili

hair-like structures

involve in the adherence and colonization

Inhibits phagocytosis

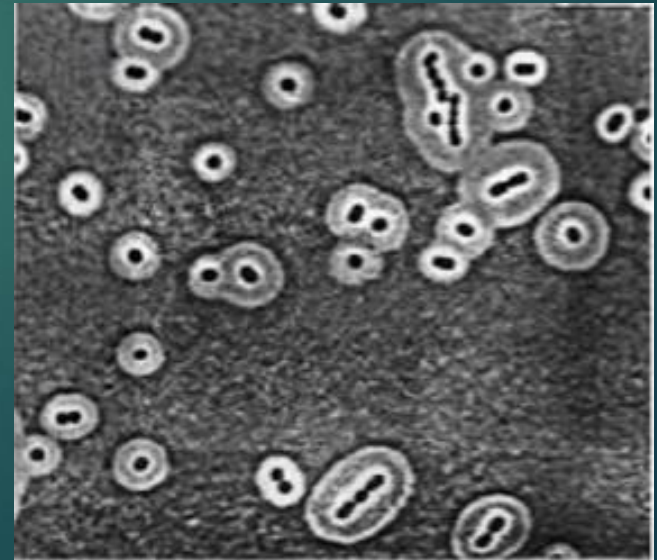
Antigenic

Cell envelope: capsule

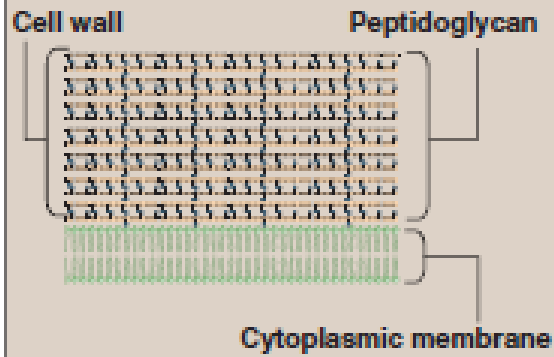
layer of polysaccharide deposited outside the cell wall

Antigenic

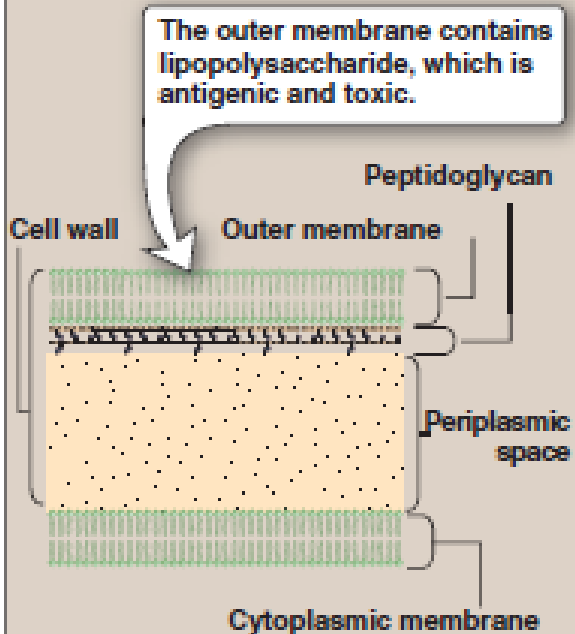
inhibit phagocytosis



A GRAM-POSITIVE



B GRAM-NEGATIVE

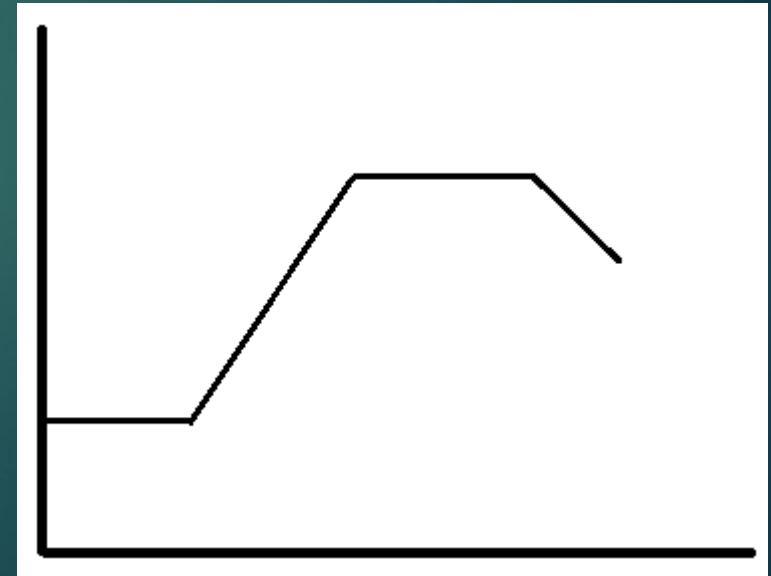


The **cytoplasmic membrane** is composed of phospholipid, the molecules of which form two parallel surfaces (called a lipid bilayer) such that the polar phosphate groups are on the outside of the bilayer and the nonpolar lipid chains are on the inside. The membrane acts as a permeability barrier, restricting the kind and amount of molecules that enter and leave the cell.

The **peptidoglycan layer** determines the shape of the cell. It is composed of a cross-linked polymeric mesh. The glycan portion is a linear polymer of alternating monosaccharide subunits: N acetylglucosamine (NAG) and N-acetylmuramic acid (NAM). This polymer is the carbohydrate “backbone” of the mesh. The “peptido” portion of the polymer is a short string of amino acids that serves to cross-link adjacent polysaccharide strands at the NAM subunits of the backbone, forming a network with high tensile strength

Growth and Metabolism

Stages of the bacterial growth cycle: Because bacteria reproduce by binary fission (one becomes two, two become four, etc.), the number of cells increases exponentially with time (the exponential, or log, phase of growth). Depending on the species, the minimum doubling time can be as short as 10 minutes or as long as several days. Eventually, growth slows and ceases entirely (stationary phase) as nutrients are depleted, and toxic waste products accumulate. Most cells in a stationary phase are not dead, however. If they are diluted into fresh growth medium, exponential growth will resume after a lag phase.



BACTERIAL PHYSIOLOGY

Classification on the basis of nutrition

Phototrophs: Bacteria using sunlight as a source of energy

Chemotrophs: Bacteria using chemical reactions as a source of energy

Classification on the basis of source of compounds needed for survival

Autotrophs: Bacteria which can synthesize all organic compounds on their own

Heterotrophs: Bacteria which are unable to synthesize their organic metabolites and rely on preformed compounds

Classification on the basis of bacteria's relationship with oxygen and carbon dioxide

Category	Requirement	Examples
Obligate aerobe	15% to 21% O ₂	<i>Mycobacterium tuberculosis</i> <i>Pseudomonas</i> <i>Micrococcus</i>
Microaerophilic	5% O ₂	<i>Campylobacter</i> <i>Helicobacter</i> <i>Brucella abortus</i>
Facultative anaerobe	Multiplies equally well in the presence or absence of O ₂	Enterobacteriaceae <i>Staphylococcus</i>
Aerotolerant anaerobe	Reduced concentration of O ₂	Most strains of <i>Propionibacterium</i> , <i>Lactobacillus</i> , some <i>Clostridium</i> species (<i>C. histolyticum</i>)
Obligate anaerobe	Strict anaerobic environment (0% O ₂)	Most bacteroid spp., many <i>Clostridium</i> spp. (<i>C. novyi</i>), <i>Eubacterium</i> , <i>Fusobacterium</i> spp., <i>Peptostreptococcus</i> spp.
Capnophilic	5% to 10% CO ₂	<i>Neisseria</i> , <i>Haemophilus</i> spp.

Energy production

Depending on the biochemical mechanism used, bacterial metabolism can be categorized into three types: aerobic respiration, anaerobic respiration, and fermentation.

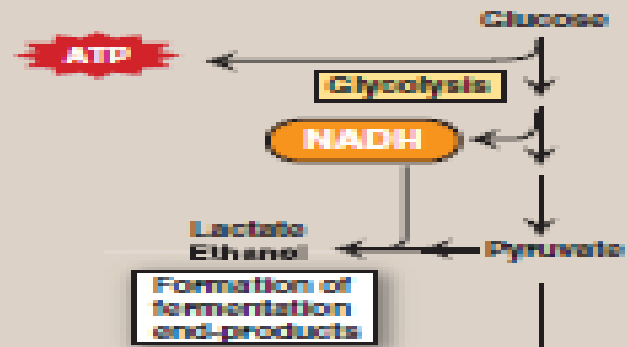
1. **Aerobic respiration** is the metabolic process in which molecular oxygen serves as the terminal electron acceptor of the electron transport chain. In this process, oxygen is reduced to water. Respiration is the energy-generating mode used by all aerobic bacteria.

2. **Anaerobic respiration** is the metabolic process in which inorganic compounds other than molecular oxygen serve as the terminal electron acceptors. Depending on the species, acceptors can be molecules such as nitrate or sulfate. Anaerobic respiration can be used as an alternative to aerobic respiration in some species (facultative organisms), but is obligatory in other species (some obligate anaerobes). [Note: Other obligate anaerobes use fermentation as the main mode of energy metabolism. This is particularly true among the anaerobic bacteria of medical importance.]

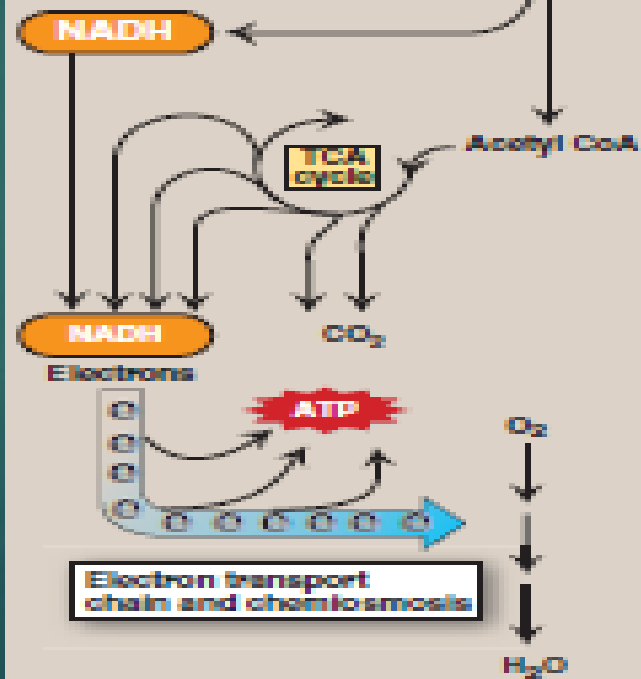
3. Fermentation is an anaerobic process utilized by some bacterial species. It is the metabolic process by which an organic metabolic intermediate derived from a “fermentable” substrate serves as the final electron acceptor. The substrates that can be fermented and the final endproducts depend on the species.

By comparison to aerobic and anaerobic respiration, fermentation yields very little energy. The purpose of fermentation is to recycle nicotinamide adenine dinucleotide hydrogen (NADH) back to NAD.

A Fermentation



B Aerobic respiration



THE BACTERIAL GENOME

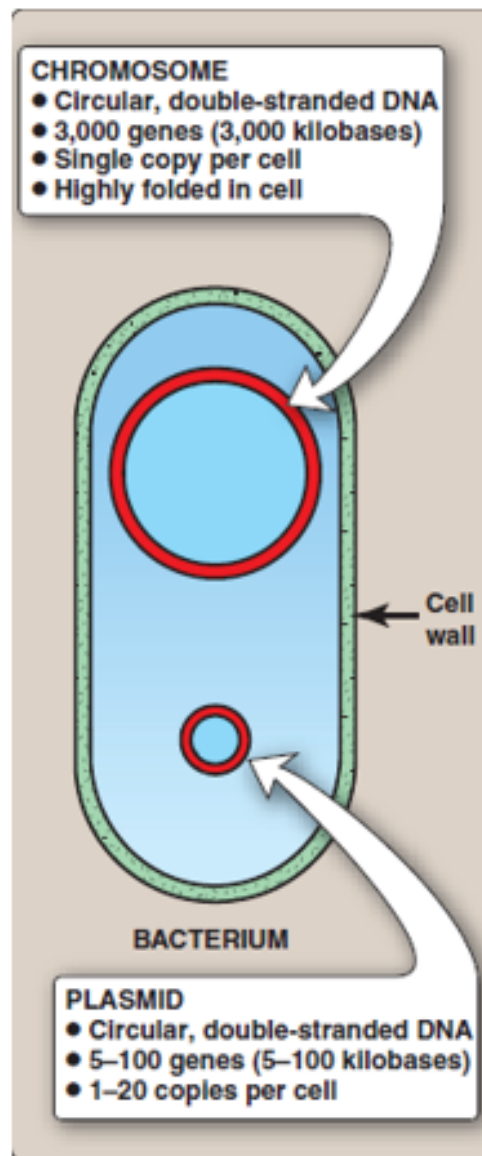


Figure 5: The bacterial genome

A. The chromosome

All of the essential genes and many nonessential genes of the bacterium are generally carried on a single, long piece of circular, double-stranded DNA.

B. Pathogenicity islands

Pathogenicity islands are discrete genetic elements that encode virulence factors, such as toxins, adhesins, secretion systems, and iron transport proteins. These islands, which range in size from 10 to 200 kB, can be horizontally transferred between bacteria, resulting in enhanced virulence and fitness in the recipient.

C. Plasmids

- Small circular double strand DNA, which range in size from 1.5 kilobase (kb) pairs to 120 kb pairs (less than one tenth the size of the bacterial chromosome).
- Plasmids replicate independently of the chromosome and can exist in the cell as one copy or as many copies.
- Plasmids can carry genes that encode toxins or proteins that promote the transfer of the plasmid to other cells but usually do not include genes that are essential for cell growth or replication.
- Many plasmids contain mobile DNA sequences (transposons) that can move between plasmids and between plasmids and the chromosome. Transposons, the repository for many antibiotic resistance genes, are responsible for the ability of some plasmids to integrate into the chromosome.

GENE TRANSFER

Genes can be transferred from one bacterial cell to another by three distinct mechanisms: conjugation, transduction, and transformation.

A. Conjugation

Conjugation is the process by which bacteria transfer genes from one cell to another by cell-to-cell contact. The donor (male) and recipient (female) cells must have the proper genetic constitution to adhere to each other, and they form a cytoplasmic bridge between the cells through which DNA can pass.

B. Transduction

Transduction refers to transfer of genes from one cell to another via a phage vector without cell-to-cell contact. There are two ways in which this can occur: generalized transduction and specialized transduction. In each case, the transducing phage is a temperate phage, so that the recipient cell survives the phage infection.

C. Transformation

Transformation is the transfer of genes from one cell to another by means of naked DNA.

BACTERIOPHAGE

A bacteriophage (phage) is a virus that replicates inside a bacterial cell.

A. Virulent phage

Infection of a bacterium with a virulent phage results in the death of the cell by lysis, with release of newly replicated phage particles.

B. Temperate phage

A bacterium infected with a temperate phage can have the same fate as a bacterium infected with a virulent phage (lysis rapidly following infection). However, an alternative outcome is also possible: Namely, after entering the cell, the phage DNA, rather than replicating autonomously, can integrate into the chromosome of the host cell. In this state (prophage), the expression of phage genes is repressed indefinitely by a regulatory protein encoded within the phage genome. No new phage particles are produced, the host cell survives, and the phage DNA replicates as part of the host's chromosome.

Pathogenesis and virulence

A pathogenic microorganism is defined as one that is capable of causing disease.

The methods by which bacteria cause disease can be divided into several stages.

The terms “virulence” and “pathogenicity” are often used interchangeably. However, virulence can be quantified by how many organisms are required to cause disease in 50 percent of those exposed to the pathogen (ID₅₀, where I = Infectious and D = Dose), or to kill 50 percent of test animals (LD₅₀, where L = Lethal).

The number of organisms required to cause disease varies greatly among pathogenic bacteria. For example, less than 100 *Shigella* cause diarrhea by infecting the gastrointestinal (GI) tract, whereas the infectious dose of *Salmonella* is approximately 100,000 organisms.

The infectious dose of a bacterium depends primarily on its virulence factors. The probability that an infectious disease occurs is influenced by both the number and virulence of the infecting organisms and the strength of the host immune response opposing infection.

Virulence factors

Virulence factors are those characteristics of a bacterium that enhance its pathogenicity, that is, properties that enable a microorganism to establish itself and replicate on or within a specific host. Some of the more important steps in the infectious process are reviewed below.