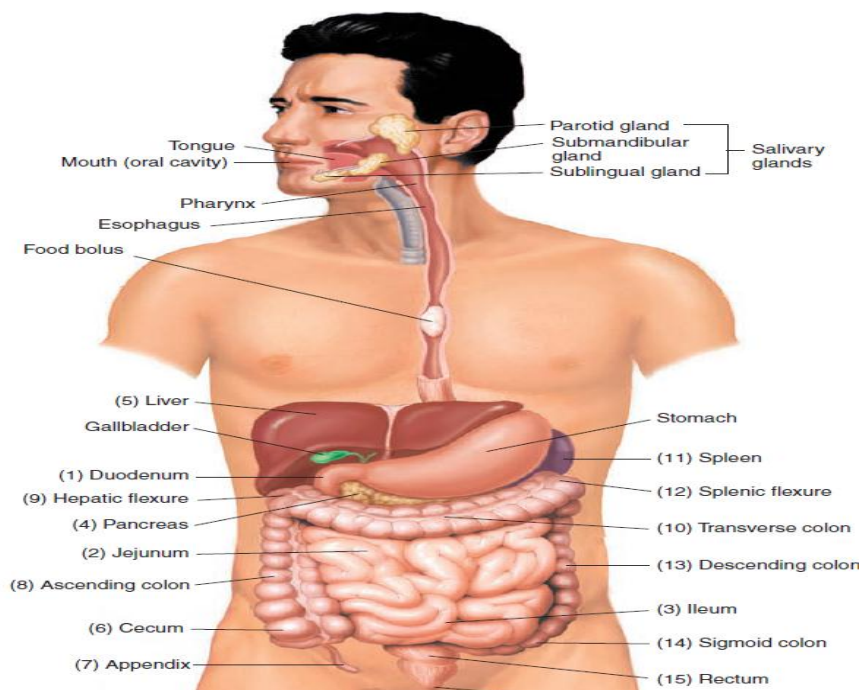


**Lecture No . 4**

**The Digestive System**



The digestive system composed of digestive tract and accessory organs such as liver , pancreas salivary gland and gall bladder .

Organ	Combining Form	Organ	Combining Form
Mouth	Stomat/o	Small intestine	Enter/o
Teeth	Dent/o, Odont/o	Duodenum	Duoden/o
Tongue	Gloss/o, Lingu/o	Jejunum	Jejun/o
Lips	Cheil/o	ileum	ile/o
gums	Gingiv/o	Large intestine	Col/o
Esophagus	Esophag/o	Sigmoid colon	Sigmoid/o
Stomach	Gastr/o	Small intestine	Enter/o
Rectum	Rect/o	Liver	Hepat/o
Anus and rectum	Proct/o	Gallbladder	Cholecyst/o
		Pancreas	Pancreat/o

### **1- Stoma = mouth**

Stomat/itis: Inflammation of the mouth

Stomat/o/plasty: Surgical repair of the mouth

Stomat/algia: Pain in the mouth

Stomat/o/rrhagia: Hemorrhage of the mouth

Stomat/o/myc/osis: Condition of mouth fungus

Stomat/o/pathy: Any disease of the mouth

Stomat/o/scope: An instrument for examining the mouth

Stomat/o/scopy: The process of examining with stomatoscope

### **2- Gloss/o = Tongue**

Gloss/itis: Inflammation of the tongue

Gloss/ectomy: Excision of the tongue

Gloss/algia: Pain in the tongue

Gloss/al: Pertaining to the tongue

Gloss/o/ptosis: Prolapse of the tongue

Gloss/o/scopy: Examination of the tongue

Gloss/o/plegia (n.): Paralysis of the tongue

Gloss/o/plegic (adj.): Paralysis of the tongue

Lingu/o = Tongue

Lingu/al (adj.): Pertaining to the tongue

Sub/lingu/al or Hypo/gloss/al : Under the tongue

### **3- Cheil/o = Lips**

Cheil/itis: Inflammation of the lips

Cheil/o/plasty: Plastic surgery of the lips

Cheil/o/tomy: Incision of the lips

Cheil/osis: Condition or disorder of the lips

Cheil/o/stomat/o/plasty: Plastic surgery of the lips and mouth

### **4- Gingiv/o = Gums**

Gingiv/al: Pertaining to the gums

Gingiv/itis: Inflammation of the gums

Gingiv/algia: Gum pain

Gingiv/ectomy: Excision of gum tissue

Gingiv/o/gloss/itis: Inflammation of the gums and tongue

Lingu/o/gingiv/al (adj.): Tongue and gums

### **5-Gastrointestinal Passage**

Process of chewing = Mastica/tion

Process of swallowing = Ingestion

Chemical breakdown of food = Diges/tion

Movement of nutrients from intestine to the blood = Absorption

Expelling solid waste = Defeca/tion

Sold waste material = Feces, stool, bowel movements

### **6-Esophag/o = Esophagus**

Eso- = Toward

Phag/o = Swallow

Esophag/eal (adj.): Pertaining to esophagus

Esophag/o/sten/osis: Narrowing of the esophagus

Esophag/o/gastr/ic: Pertaining to the esophagus and stomach

Gastr/o/esophag/eal Reflux Disease (GERD): Chronic heartburn and esophageal irritation caused by Reflux of stomach acid into an esophagus

### **7- Gastr/o = Stomach**

Gastr/o/rrhagia: Stomach hemorrhage

Gastr/itis: Inflammation of the stomach

Gastr/ic: Pertaining to the stomach

Gastr/ectasia: Dilatation (stretching) of the stomach

-ectasia = stretching or dilatation

Gastr/o/enter/o/ptosis: Prolapse of the stomach and small intestine

Gastr/o/enter/o/logy: Specialty that studies diseases of the stomach and intestine

### **8- Enter/o = Small intestine, Intestine**

Enter/o/clysis: Washing or irrigation of the small intestine

Enter/o/plegia: Paralysis of the small intestine

Enter/ectasia: Dilatation of the small intestine

Enter/o/ptosis: Prolapse of the small intestine

Enter/o/centesis: Surgical puncture of the small intestine

Enter/o/scope: Instrument to examine the small intestine

### **9- Hepat/o = Liver**

*Hepar* = Liver

Hepat/ic: Pertaining to the liver

Hepat/o/megaly: Enlargement of the liver

Hepat/o/scopy: Inspection of the liver

Hepat/o/pathy: Any disease of the liver

Hepat/o/tomy: Incision into the liver

Hepat/ectomy: Excision of the liver

Hepat/itis: Inflammation/infection of the liver

Hepat/o/rrhagia: Hemorrhage of the liver

Hepat/o/rrhaphy: Suture of a wound of the liver

Hepat/o/cele: Hernia of the liver

Hepat/o/dynia: Pain in the liver

Hepat/o/lith: Stone in the liver

### **10- Pancreat/o = Pancreas**

Pancreat/ic: Pertaining to the pancreas

Pancreat/o/lysis: Destruction of pancreatic tissue

Pancreat/o/lith: a stone or calculus in the pancreas

Pancreat/o/pathy: Any pancreatic disease  
Pancreat/ectomy: Excision of part or all of the pancreas  
Pancreat/o/tomy: Incision into the pancreas  
Pancreat/itis: Inflammation of the pancreas

**11- Splen/o = Spleen**

Splen/ectomy: Excision of the spleen  
Splen/o/megaly: Enlargement of the spleen  
Splen/o/ptosis: Prolapse of the spleen  
Splen/o/pexy: Surgical fixation of the spleen  
Splen/o/pathy: Any disease of the spleen  
Splen/o/rrhaphy: Suture of the spleen  
Splen/o/rrhagia: hemorrhage from the spleen  
Splen/algia: Pain in the spleen  
Splen/ic: Pertaining to the spleen

Abbreviation	
BM	Bowel movement
PO	By mouth ( <i>per os</i> )
NPO	Nothing by mouth
EGD	Esophagogastroduodenoscopy
ERCP	Endoscopic retrograde cholangiopancreatography
GERD	Gastroesophageal reflux disease
Hep B	Hepatitis B vaccine
HAV	Hepatitis A Virus
HBV	Hepatitis B Virus
HCV	Hepatitis C Virus
HP	<i>Helicobacter pylori</i>
GI	Gastrointestinal
GB	Gall bladder
NG	Nasogastric
HCL	Hydrochloric acid
BE	Barium enema